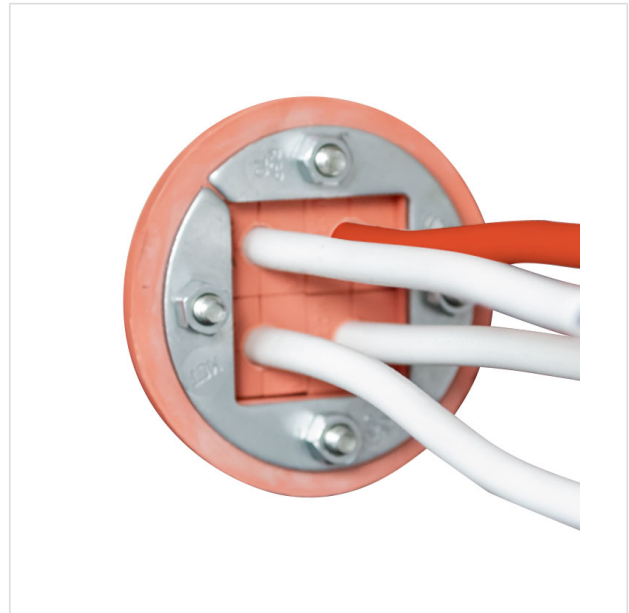


PEXTBALI

Breakthrough for cable entry with fire-resistant cable

COMPLIANCE



TECHNICAL FEATURES

Model

PEXTBALI

ADDITIONAL ACCESSORIES RECOMMENDED – FILTRATION OR VENTILATION BOXES

- High security cabinet 90 min lithium batteries 2 doors + 1 fire extinguisher EX200LI + 4 shelves E35LI (Réf : 795+LIA4)
- Low security cabinet 90 min lithium batteries 2 doors + 1 fire extinguisher EX100LI + 2 shelves E35LI (Réf : 793+LIA2)
- Safety cabinet 90 min for lithium batteries High 2 doors + VIG290 + 4 E35LI (Réf : 795+LIX4)
- Low Safety cabinet 90 min for lithium batteries 2 doors + VIG190 + 2 E35LI (Réf : 793+LIX2)
- Safety cabinet 90 min lithium batteries Counter 1 door with 1 fire extinguisher EX100LI + 2 shelves E48LI (Réf : 798+LIA2)
- Safety cabinet 90 min lithium batteries Counter 1 door + 2 E48Li + Vig190 (Réf : 798+LIX2)
- Safety cabinet 90 min lithium batteries high 1 door with 1 fire extinguisher EX100LI + 4 shelves E48LI (Réf : 794+LIA4)
- Safety cabinet 90 min lithium batteries high 1 door + 4 E48Li + Vig190 (Réf : 794+LIX4)

Model	External dimensions HxWxD (mm)	Internal dimensions HxWxD (mm)	Storage capacity (L)	Containment sump	Shelves	Load capacity	Weight (kg)
PEXTBALI			0		0	0	0.00